

Dear Parents

Re: Communication with Parents

In light of the fast-changing situation regarding the Covid-19 coronavirus outbreak, it is prudent that we update parents on our response to the current situation and make some contingency plans for the various scenarios that we may face.

We are receiving comprehensive guidance from government, updated daily, which is distributed to all staff. We act on the basis of this guidance. Whilst the government has discussed the possibility of closing schools, there is no current plan to do so. North East Derbyshire is open as normal and all provision is running as planned.

Steps we are taking include:

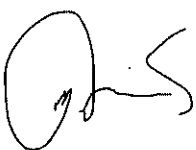
- Increased awareness about the importance of hand washing through additional signage and education
- Supervised handwashing throughout the day, especially at lunch time
- Increased cleaning of high-contact areas throughout the school
- Ensuring that all staff have read and understand the government guidance for education settings
- Keeping all school events and trips under review

You'll be aware that we recently introduced the Parent Pay system. Whilst the system is predominantly used in schools as a means to pay for meals and trips, it is also a communication platform and from this point on will be our primary means of mass communication. If you have not yet set up Parent Pay, can I ask that you do so at the earliest convenience.

Future updates regarding coronavirus will be sent via Parent Pay, this includes information relating to school closure, should we be required to do so. Any further information will also be available on the school website: www.nedsc.derbyshire.sch.uk.

Please find enclosed a copy of the activation letter for Parent Pay, along with general information and guidance from our Multi-Academy Trust.

Yours faithfully



**Matt Morris
Headteacher**



Registered Office:
Suite 43 Pure Offices,
Lake View Drive, Annesley, Nottingham, NG15 0DT

Telephone: 01623 859749
Website: www.esteemmat.co.uk
Email: info@esteemmat.co.uk

13 March 2020

Dear parent/carer,

Coronavirus (COVID-19)

Esteem Multi-Academy Trust and its academies are monitoring updates and advice daily from the UK government regarding the Coronavirus and is taking the necessary measures to keep students and staff safe.

We are actively maintaining good hygiene and cleaning procedures throughout our academies in order to minimise the chances of spreading the virus.

As I'm sure you can appreciate, we are currently dealing with a complex and rapidly changing situation. Our priority is, and will always be, to safeguard the health and safety of our students and staff in our academies.

To help alleviate any uncertainty within our school communities, we enclose a Parents and Carers FAQs sheet, which hopefully answers any questions you may have and explains what will happen if a partial or full academy closure is necessary at your child's school.

I take this opportunity to thank you for your continued support of your child's academy.

Yours faithfully



Julian Scholefield
Chief Executive Officer
Esteem Multi-Academy Trust

Parents and Carers

Frequently Asked Questions

We aim to keep these FAQs updated and distribution is for all schools, students, parents and carers within Esteem MAT. Although the some of the FAQs are directed towards schools, the majority of the advice is relevant to other settings.

What is the latest information from the government?

- Schools are not being asked to close unless specifically advised to do so.
- Students, Parents and Carers with a new continuous cough or a fever, with a temperature above 37.8 degrees centigrade, are to self-isolate for 7 days. This must be reported to school via the normal reporting procedures.
- Anyone with minor symptoms are asked **NOT** to call 111 unless their condition deteriorates where medical attention is required.
- It is important that we continue with the prevention methods already communicated i.e. washing hands.

What symptoms do I need to look out for?

- Cough
- Difficulty in breathing
- Fever (a temperature above 37.8 degrees C)

If myself or my child have these symptoms, what do I do?

Avoid contact with others i.e. self-isolate for 7 days

I am a Parent or Carer with symptoms, but my child doesn't, what should I do?

If you have symptoms and are self-isolating for 7 days as you suspect you have the Covid-19 virus, please do not send your child to school as it is likely that they will also be contagious. Please include your child in the self-isolation for 7 days.

After 7 days can my child come back to school?

Yes, once the 7 days of self-isolation are completed and your child is symptoms free, they will be able to return to school.

I have heard that a member of staff in school has the Covid-19 virus...

If a member of staff is self-isolating, we are following Department for Education (DfE) guidance in these circumstances. For reasons of patient confidentiality, we are not able to disclose who has contracted the virus. This is for the health and safety of the patient and staff. Current guidance is to deep clean specific areas which will mean all areas of the school are safe for your children to be in. Safety of both students and staff is paramount to us.

How will I be informed if my child's school has a full or partial closure?

A decision to fully or partially close a school is not taken lightly and will be made if circumstances arise. This maybe for a variety of reasons but we will endeavour to keep parents and carers informed via the normal communication channels.

Who will inform transport?

If your child is absent and the school is still open, it will be your responsibility to inform the transport operator as you normally would.

If the school is forced to fully or partially close, the school will contact the respective Local Authority SEND Transport Department to notify them of the closure.

How long will the school be closed?

We are unable to confirm how long a school will be closed as this depends upon the circumstance of closure. This maybe for a day or 2 days to conduct a full deep clean or this could be for longer if we are directed to remain closed by the DfE or Public Health England.

How will I know when the school will re-open?

Once the school is ready to re-open, you will be informed via the normal communication channels and this information will also be on the school and Trust website.

Where can I go for more information?

The Department for Education is regularly updating its website to include the latest guidance As a Trust we will continue to update our website with any relevant information

If there is anything you need to be aware of, your headteacher/line manager will be in contact directly with you.

Additionally, you can see the public information on the NHS Website and government website

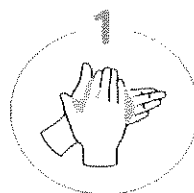
Hand Washing Advice



Coronavirus

Wash your hands with soap and water more often for 20 seconds

Use a tissue to turn off the tap.
Dry hands thoroughly.



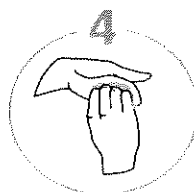
Palm to palm



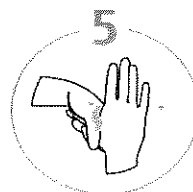
The backs of hands



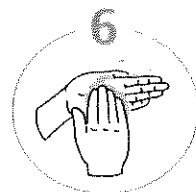
In between the fingers



The back of the fingers



The thumbs



The tips of the fingers

